

## Team

### Employees at CVcare

Centre of Excellence for Health Services Research  
for Healthcare Professionals



- 1 Prof. Dr. med. Albert Nienhaus Director CVcare Scientific staff
- 2 Dr. P. H. Anja Schablon
- 3 Jan Felix Kersten
- 4 Dania Kitzig
- 5 Olaf Kleinmüller
- 6 Peter Koch
- 7 Agnessa Kozak
- 8 Janna Lietz
- 9 Elisabeth Muth
- 10 Claudia Peters
- 11 Susanne Steinke
- 12 Nazan Ulusoy
- 13 Claudia Westermann
- 14 Tanja Wirth
- 15 Claudia Wohlert

## Map and contact

### Map



### Contact

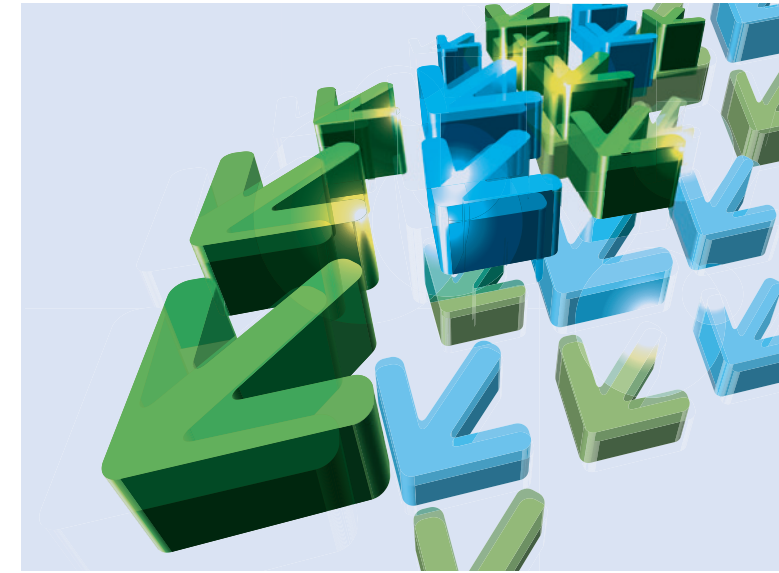
- University Medical Center Hamburg-Eppendorf (UKE)
- Competence Centre for Epidemiology and Health Services Research for Healthcare Professionals (CVcare)

Bethanien-Höfe Eppendorf  
Martinstraße 52  
20246 Hamburg, Germany  
tel.: +49 (0) 40 7410-59707  
fax: +49 (0) 40 7410-59708  
www.cvcare.de  
info@cvcare.de

### Cooperation partner:



Competence Centre for Epidemiology  
and Health Services Research for  
Healthcare Professionals (CVcare)



## Introducing CVcare

The Competence Centre for Epidemiology and Health Services Research for Healthcare Professionals (CVcare) is one of three departments belonging to the Institute for Health Services Research in Dermatology and Nursing (IVDP) at the University Medical Center Hamburg-Eppendorf (UKE). The IVDP is aiming to plan and carry out clinical studies and studies in health-care economics and health services research.



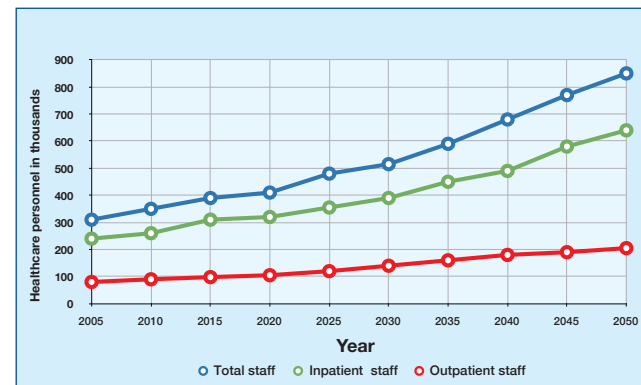
The CVcare provides epidemiological data on the working conditions and health of nursing staff and other employees in the health and welfare sector.

Work-related health promotion, prevention and rehabilitative measures for these occupations are evaluated in terms of health services research. Both the requirement for new measures and the effectiveness of existing ones are investigated. The key base data is derived from information routinely collected by the social insurance schemes (accident, health and pension insurance), registered findings of preventive medical check-ups by company doctors in accordance with the German Occupational Medical Surveillance Directive (ArbMedVV) as well as surveys and controlled studies carried out by the department itself.

CVcare

## Main subject areas

- The working conditions of employees in health care professions
  - older employees
  - health of trainees
  - influence of migration
- Recording and prevention of work-related psychosocial burdens
- Prevention and rehabilitation of work-related musculoskeletal disorders
- Occupational infection risks, primarily tuberculosis, chronic hepatitis and multi-resistant pathogens
- Maintenance of a tuberculosis network of company doctors
- Evaluation of violence and critical incidents in the workplace
- Evaluation of rehabilitation measures in statutory accident insurance



Professional healthcare personnel requirement from 2007 to 2050 Source: T. Hackmann, Gefährdungsprofile, second revised and extended edition, Ecomed-Verlag

## Cooperation BGW/CVcare

The CVcare is supported by a foundation of the Statutory Accident Insurance in the Health and Welfare Services (BGW). The endowment of a chair at the UKE currently held by Prof. Dr. med. Albert Nienhaus was initiated and funded by the BGW's self-administration. By funding the endowed chair the BGW aims to promote separate and independent research in the field of workrelated health promotion and prevention and rehabilitation for employees in the health and welfare services in accordance with its statutory mandate. That is why there is close cooperation between CVcare and the BGW, especially with the BGW's Basics of Prevention and Rehabilitation (GPR) department.

